

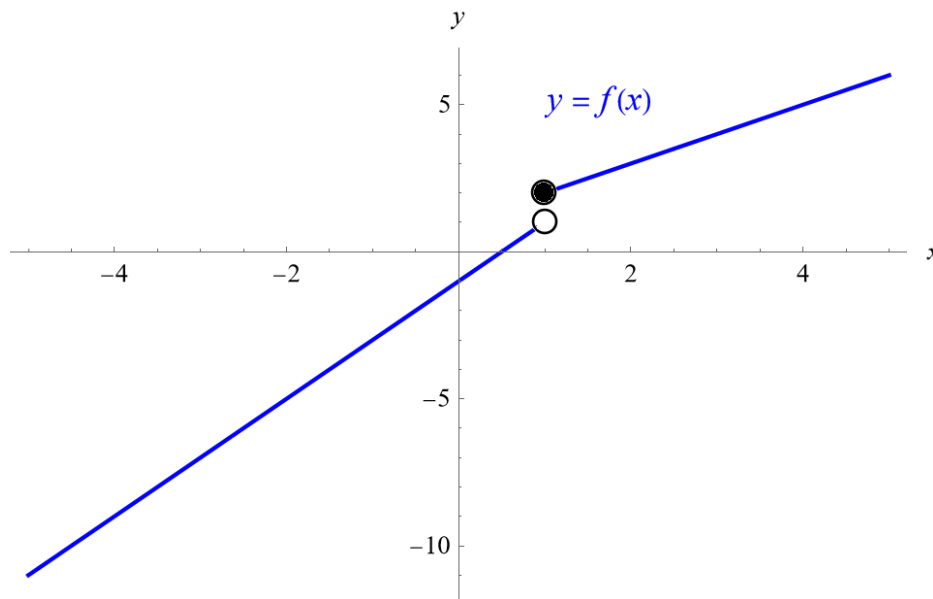
Exercise 39

For the following exercises, sketch a graph of the piecewise function. Write the domain in interval notation.

$$f(x) = \begin{cases} 2x - 1 & \text{if } x < 1 \\ 1 + x & \text{if } x \geq 1 \end{cases}$$

Solution

Below is a plot of $f(x)$ versus x .



The domain is $(-\infty, \infty)$.